

Cable Reel

FRD 63-150-200



It is with pleasure that we submit to your attention the new series of cable reel for dock cable FRD series in sizes 63-150-200.

Since the design phase we have chosen to use components of absolute reliability, creating a complete product also in terms of installation accessories.

Here are some technical/construction features (some of which are patented) that characterize this product.

The materials used are suitable for use in the marine environment, (supporting structure and traction pulleys in anodized aluminum, shafts and screws in stainless steel, Teflon® roller support).

All this in order to ensure a long operating life and no maintenance.

The gearbox is of industrial derivation, designed for heavy and continuous services, guarantees absolute silence.

The ventilated DC electric motor is designed to withstand high loads without overheating.

In the making of this product, we paid a lot of attention to the operator's safety during the use of the cable reel, ensuring maximum functionality.

The structure is, in fact, totally closed, in order to avoid accidental access of the operator to the pulleys.

On the inside, the electric cable is totally guided by nine Teflon® rollers, so it does not have the possibility to "climb over" the pulleys.

The extension or collection action of the electric cable can be controlled by a remote panel (which can be positioned in a suitable area at the discretion of the installer) on which the total extension of the cable or the total rewind are indicated by a light indication. The control can also be managed from a radio control supplied as standard.



The movement of the cable is progressive (function patented F.E.I.T. PUMPS).

The cable and plug are accompanied by the operator during the extension/collection actions. To facilitate it and ensure smooth and safe

handling, the cable is extended and rewound at a progressive and controlled speed. No dangerous tugging occurs, for example, when crossing the gangway with the cable in your hand. The force applied by the motor is electronically controlled (function object of F.E.I.T. PUMPS patent), this means that, in the event of cable jams, once a certain force has been reached, the FRD63-150-200 stops without unnecessarily stressing the cable.

Two proximity sensors are used to stop when the total extension / recovery of the cable is reached. This avoids any "mechanical" stop contact of the cable.

Once the total extension / collection has been reached, the movement of the cable will be stopped immediately and the condition will be signaled on the remote panel (the corresponding LED lights up).

To install the machine, stainless steel angles are supplied, and can be installed on 3 sides (pre-drilled holes for the ceiling, the wall and the base).

The machine can be positioned at different angles (for installation limits, consult our technical office).

The plug housing is equipped with an anodized aluminum lid with sealing gasket and is sized to accommodate common commercial plugs. On request, cubic hawsehole of customized diameter and length can be made.



The cable reel only needs a 24V power supply. The remote panel and the hawsehole sensor have a prewired connector with 2 meters of cable (extensions available).

The cable reel is supplied with the following components:

- FRD63-FRD150-FRD200 cable reel complete with two proximity sensor and adjustable "C" support (for connection to the hawsepipe)
- Fixing kit
- Remote control panel

- 2-channel remote control
- Hawsepipe complete with closing cover, proximity sensor, stainless steel fixing counter-flange and adjustable "C" support (for connection to the cable reel).

To simplify installation, especially when the machine is positioned at a distance from the hawsehole, we have prepared a series of modular accessories that can be combined with each other, such as:

- Sliding roller supports
- different sized support plates
- 45/90° curves
- spiral roller conveyor (spring) for particularly articulated passages

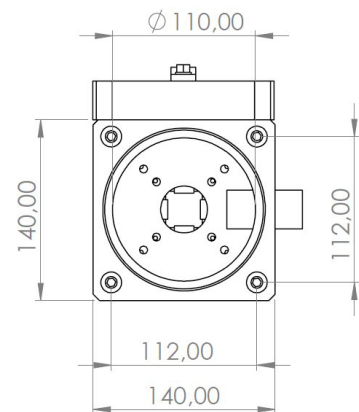
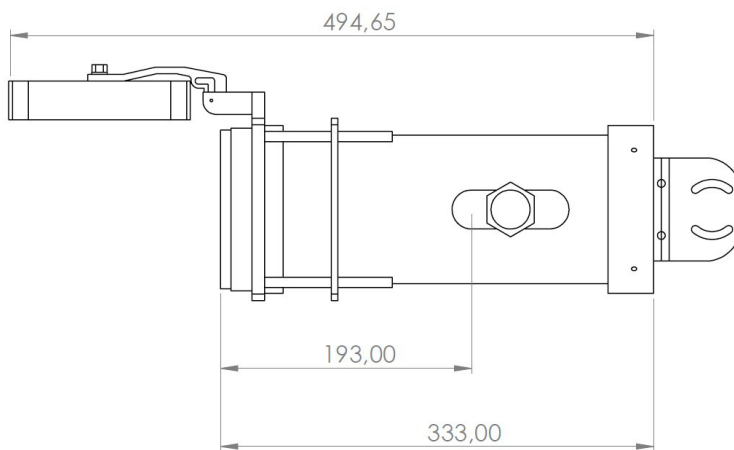
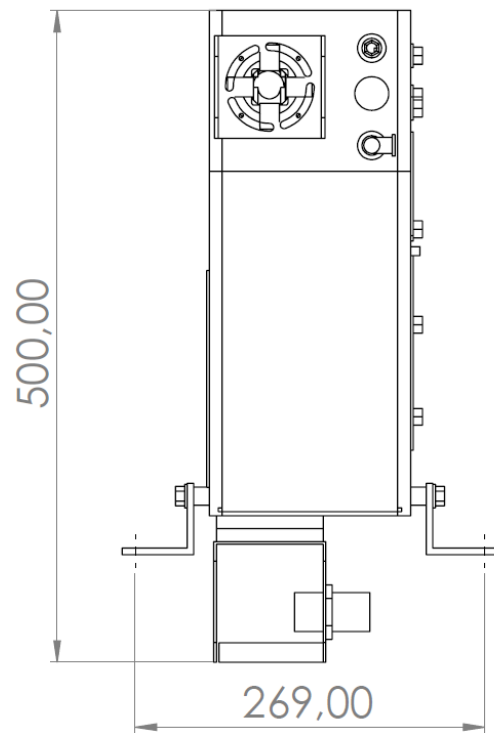
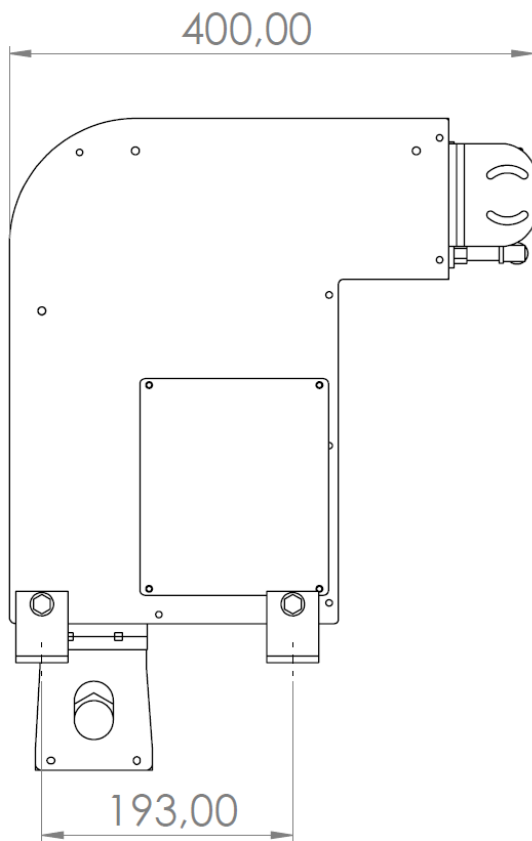
The collected cable can be stored inside a cylindrical container, made of welded PEHD. The standard dimensions are Ø560mmxh600mm. The dimensions of the containers can be customized. Finally, with the collaboration of a leading company in the production of special electrical cables, we have created an electrical cable with an outer sheath in white polyurethane, made in class 6, with particular characteristics of flexibility and resistance to abrasion and to the marine environment, as well as UV protection and certifications (*IEC 60502-1 - CEI EN 60228 - CEI UNEL 00722 - CEI UNEL 00725 - CEI 20-52 - CEI EN 60811-1-1 IEC 60754-1 -Directive 2011/65/EU 8 - Directive 2014/35/EU*), available in different sections on request.

Currently the production foresees 3 sizes of cable reel with the ability to manage cables up to a maximum of 50mm and an amperage of 200A.



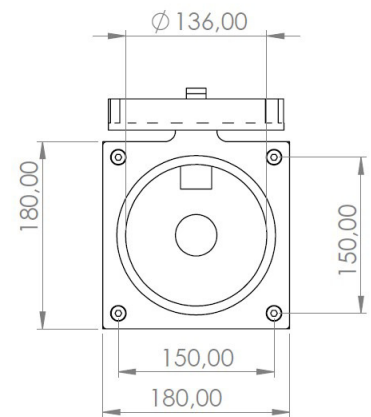
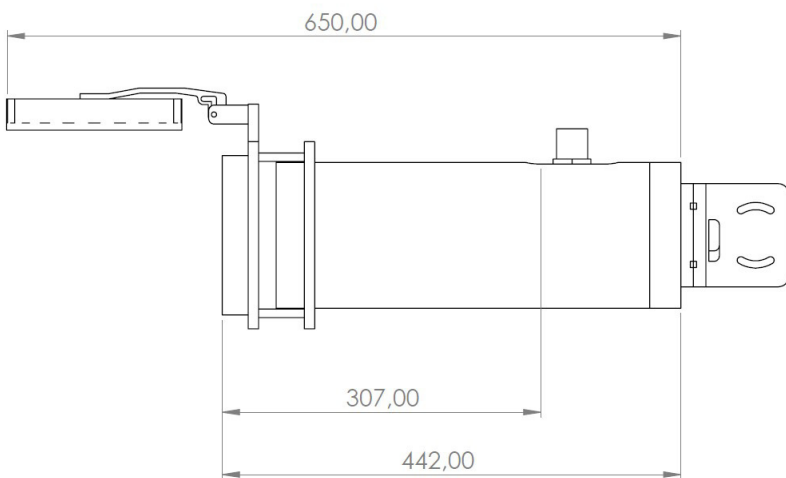
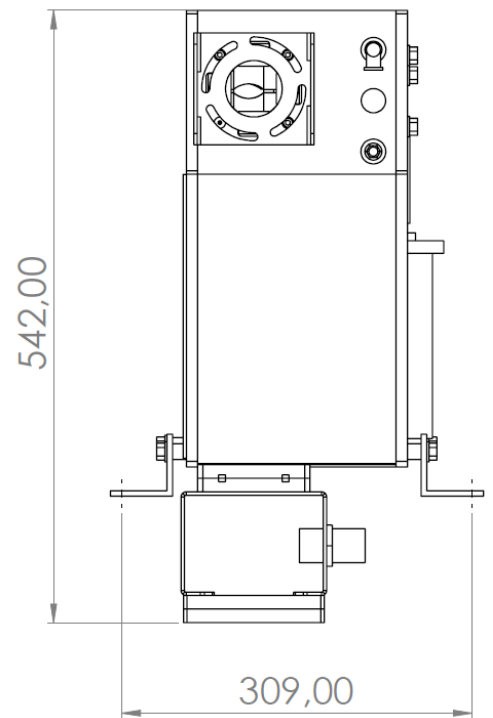
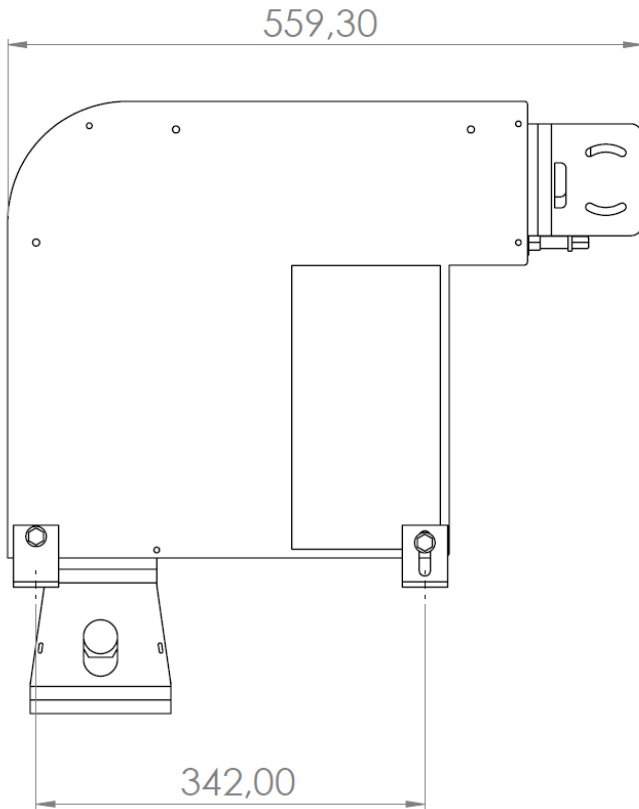
FRD 63

Model	Volt	Kw	Weight	Ø Max cable	Max Amp
FRD 63	24	0,25	19	25mm	63A



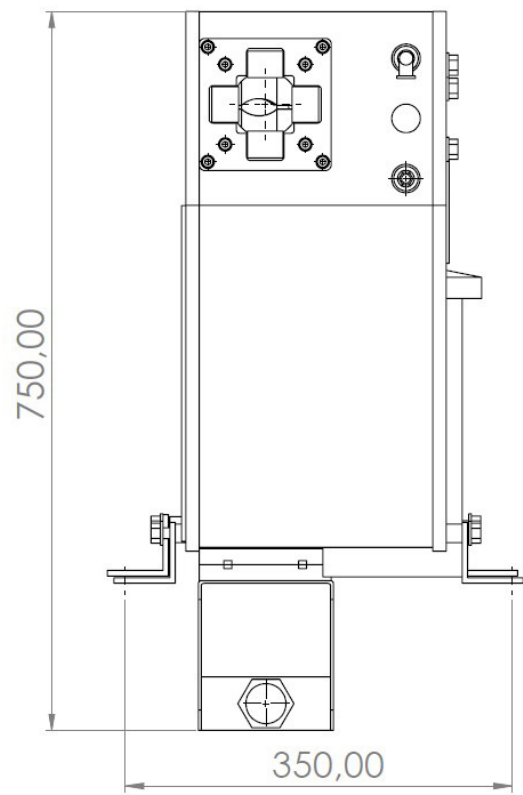
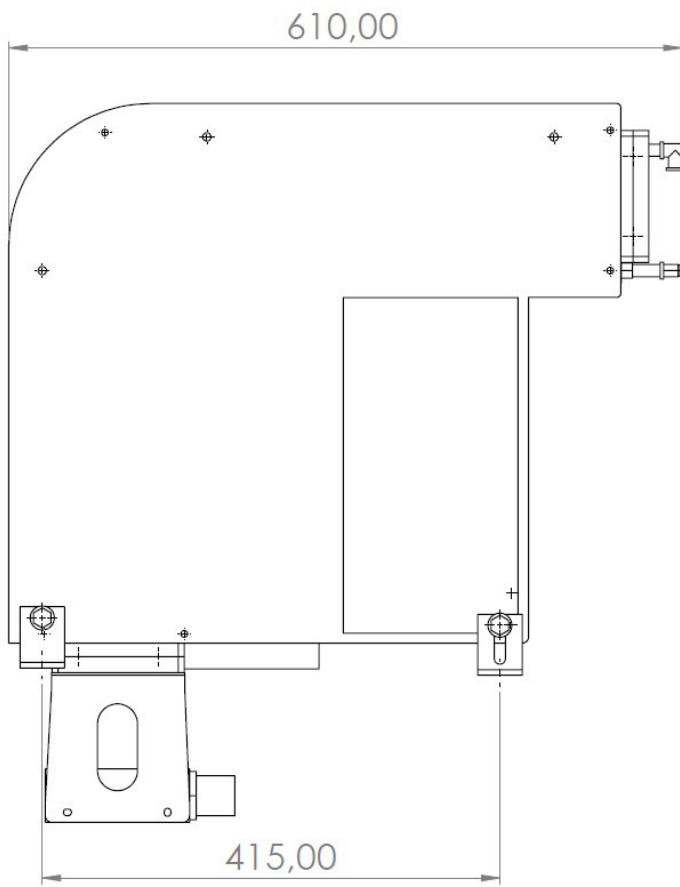
FRD 150

Model	Volt	Kw	Weight	Ø Max cable	Max Amp
FRD 150	24	0,37	28	38mm	160A

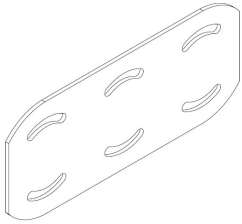


FRD 200

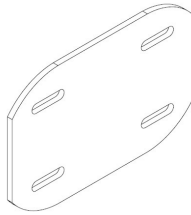
Model	Volt	Kw	Peso	Ø Max cable	Max Amp
FRD 200	24	0,55	35	48mm	300A



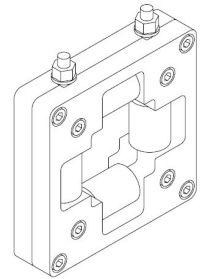
ACCESSORIES



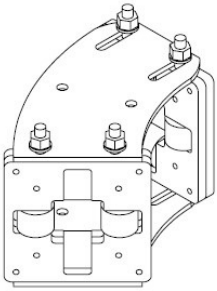
6 Hole Plate



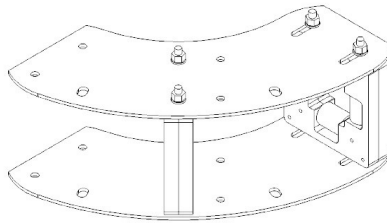
4 Hole Plate



Roller



Curve at 45°



Curve at 90°

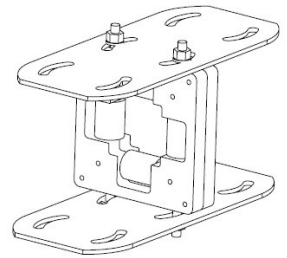


Plate with roller

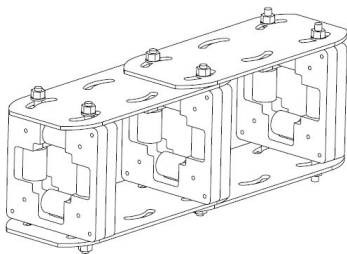
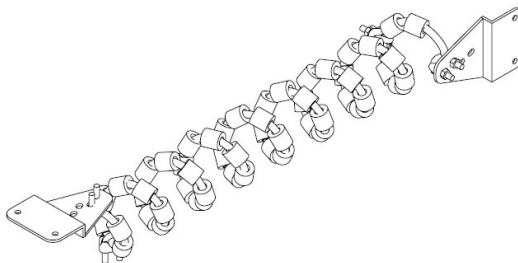
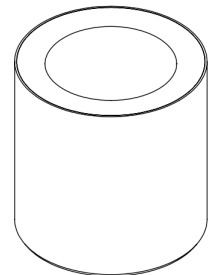


Plate with 3 roller



Cable guide spring



Cable container

INSTALLATION EXAMPLE

